

2018 KS2 School Dashboard for governors & school leaders

Produce custom dashboards at
www.fftaspire.org

Queensway Primary School

LA Leeds DFE 3832356 Produced September 2018 Version 1

What it is

Seven easy-to-use reports which help governors and school leaders to evaluate school performance using the latest 2017 DFE school performance indicators.

What it tells you

- What are the strengths and areas for improvement in your school?
- How does attainment and pupil progress compare to the national average?
- How are you performing in different subjects?
- Do you have any under-performing groups of pupils?
- How might the context of your school affect performance?
- How does pupil attendance compare to the national average?

About the data shown

1 2 3

Actual results

Actual results for your school, using a range of measures such as averages and thresholds.



Gauges

These display headline indicators and whether actual results and pupils' progress are in line with, or significantly above or below, the national average.

ESTIMATED



1 2 3

Pupil progress

The value added progress that your pupils have made from one key stage to the next. FFT compares your actual results to the estimated results based on the progress of similar pupils nationally.



Statistical significance

Green plus signs and red minus signs highlight where either actual results or pupils' progress is significantly above or below the national average.



Trends

The dashboard analyses school performance over 3-5 years. Any significant year-on-year improvement is highlighted using an up arrow. Significant declines in performance are highlighted with a down arrow.



Strengths & weaknesses

These highlight key pupil groups and subjects where progress is above or below the national average.

Working in partnership with



Data sources

Generated from FFT Aspire which includes data sourced from the DfE (National Pupil Database) and data calculated by FFT. FFT is accredited as a DfE supplier to receive early access to ASP data. Headline performance indicators will be consistent with the DfE School Performance Tables and ASP.

Overview

KS2 Attainment 2018 · Actual results

29 pupils

KS2 Progress 2018 · Value Added

29 matched pupils

Average Scaled Score (Re, Ma)

% Expected standard+ (Re, Wr, Ma)

Average Scaled Score (Re, Ma)

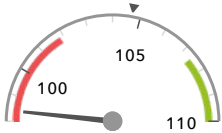
% Expected standard+ (Re, Wr, Ma)

98.4 ↓

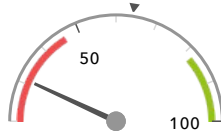
31% ↓

-4.8 ↓

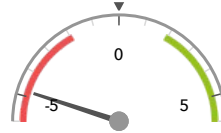
-22% ↓



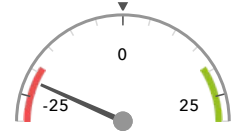
Significantly below the national average (104.7) ◀



Significantly below the national average (64%) ◀



Significantly below the national average (0) ◀



Significantly below the national average (0%) ◀

KS2 higher and lower performing pupil groups 2018

	Higher performing	Lower performing
Overall achievement pupil progress		Lower attainers (15) ↓ Female (14) ↓ Summer Term (7) ↓
KS2 reading achievement pupil progress		Summer Term (7) ↓ Lower attainers (15) ↓ FSM (in last 6 years) (12) ↓
KS2 writing achievement pupil progress	Summer Term (7)	Autumn Term (14) FSM (ever) (13) Lower attainers (15)
KS2 mathematics achievement pupil progress		Lower attainers (15) ↓ Female (14) ↓ Spring Term (8) ↓
KS2 grammar, punctuation & spelling achievement pupil progress		Female (14) ↓ FSM (in last 6 years) (12) ↓ Lower attainers (15) ↓

Attainment & progress

KS2 Attainment 2018

29 pupils

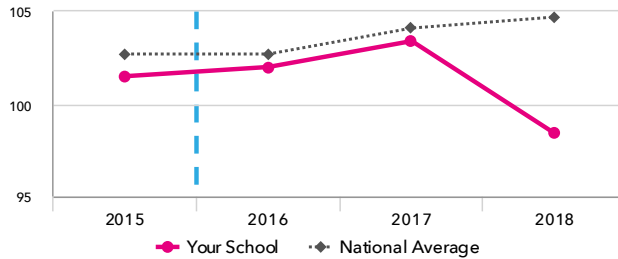
Average Scaled Score (Re, Ma)

98.4 - ↓

FFT Rank



Significantly below the national average (104.7)



KS2 Progress 2018

29 matched pupils

Average Scaled Score (Re, Ma)

-4.8 - ↓

FFT Rank

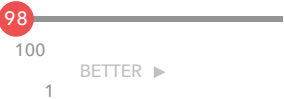


Significantly below the national average (0)

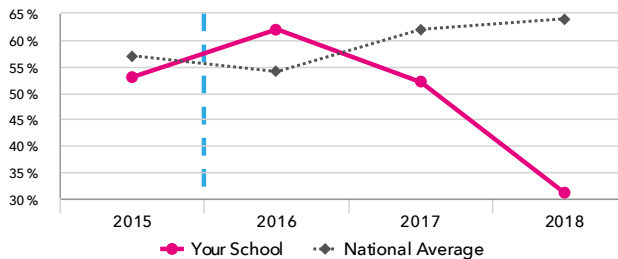
% Expected standard+ (Re, Wr, Ma)

31% -

FFT Rank



Significantly below the national average (64%)



% Expected standard+ (Re, Wr, Ma)

-22% -

FFT Rank



Significantly below the national average (0%)

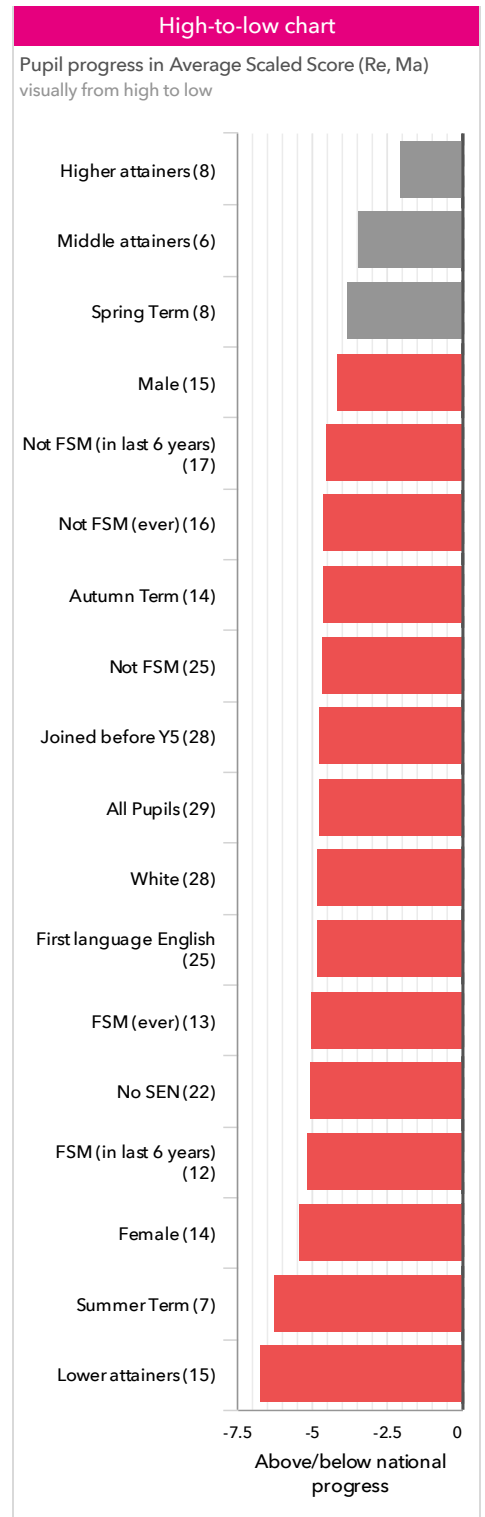
KS2 performance summary

	Actual results			Pupil progress		
	2016	2017	2018	2016	2017	2018
Number of Pupils / % Matched	29	31	29	100%	97%	100%
% Expected standard+ (Re, Wr, Ma)	62%	52%	31% -	+18%	+2%	-22% -
% Higher standard (Re, Wr, Ma)	3%	13%	0%	+2%	+8%	-7%
Average Scaled Score (Re, GPS, Ma)	103.2	103.3	98.1 - ↓	+2.1 + ↑	+0.2	-5.3 - ↓
Average Scaled Score (Re, Ma)	102.0	103.4	98.4 - ↓	+1.3	+0.7	-4.8 - ↓
% Expected standard+ Reading	62%	65%	41% -	+4%	+5%	-23% - ↓
% Higher standard Reading	14%	19%	10% -	+5%	+3%	-11%
Scaled Score Reading	100.4	103.4	100.8 -	-0.0	+0.2	-4.1 - ↓
% Expected standard+ Writing	83%	71%	66%	+14%	+7%	-2%
% Higher standard Writing	10%	13%	10%	+4%	+2%	-5%
Scaled Score Writing	102.0	98.9	97.8 -	+2.6 +	+1.3	-1.6 - ↓
% Expected standard+ Maths	90% +	68%	34% - ↓	+24% +	+3%	-30% - ↓
% Higher standard Maths	10%	26%	7% -	+1%	+9%	-11%
Scaled Score Maths	103.6	104.1	97.1 - ↓	+2.4 +	+1.2	-5.4 - ↓
% Expected standard+ Grammar, Punctuation & Spelling	90%	58% - ↓	45% -	+25% +	-7%	-21% -
% Higher standard Grammar, Punctuation & Spelling	17%	19%	7% -	+6%	-2%	-20% -
Scaled Score Grammar, Punctuation & Spelling	105.0	102.3 -	98.7 -	+3.2 + ↑	-2.2 - ↓	-6.5 - ↓
% Expected standard+ Science	100% +	84%	69%	-	-	-
Average Point Score (Re, Wr, Ma)	-	-	-	-	-	-
% Level 4+ (Re, Wr, Ma)	-	-	-	-	-	-
% Level 4B+ (Re, Wr, Ma)	-	-	-	-	-	-
% Level 5+ (Re, Wr, Ma)	-	-	-	-	-	-

Pupil groups

KS2 Pupil groups performance 2018

		Pupils	Actual results			Pupil progress		
			Average Scaled Score (Re, Ma)	% Expected standard + (Re, Wr, Ma)	% Higher standard (Re, Wr, Ma)	Average Scaled Score (Re, Ma)	% Expected standard + (Re, Wr, Ma)	% Higher standard (Re, Wr, Ma)
Summary	All Pupils >	29	98.4 ⬇	31% ⬇	0%	-4.8 ⬇	-22% ⬇	-7%
Gender	Male >	15	97.5 ⬇	40%	0%	-4.2 ⬇	-10%	-7%
	Female >	14	99.3 ⬇	21% ⬇	0%	-5.4 ⬇	-34% ⬇	-6%
Prior Attainment	Higher attainers >	8	107.9 ⬇	88%	0%	-2.1 ⬇	-6%	-22%
	Middle attainers >	6	101.6 ⬇	33%	0%	-3.5 ⬇	-39%	-2%
	Lower attainers >	15	91.0 ⬇	0% ⬇	0%	-6.7 ⬇	-23%	-0%
Pupil Premium	FSM (in last 6 years) >	12	97.9	25%	0%	-5.1 ⬇	-22%	-3%
	Not FSM (in last 6 years) >	17	98.7 ⬇	35% ⬇	0%	-4.5 ⬇	-22%	-9%
FSM	FSM >	4	101.4	25%	0%	-5.3	-44%	-6%
	Not FSM >	25	97.8 ⬇	32% ⬇	0%	-4.7 ⬇	-18%	-7%
FSM Ever	FSM (ever) >	13	97.6	23%	0%	-5.0 ⬇	-22%	-3%
	Not FSM (ever) >	16	98.9 ⬇	38% ⬇	0%	-4.6 ⬇	-21%	-10%
Term of Birth	Autumn Term >	14	99.0 ⬇	29% ⬇	0%	-4.6 ⬇	-29% ⬇	-5%
	Spring Term >	8	99.3	38%	0%	-3.8	-6%	-4%
	Summer Term >	7	96.4 ⬇	29%	0%	-6.2 ⬇	-26%	-13%
SEN Group	SEN Support >	4	97.1	50%	0%	-1.9	+11%	-2%
	EHC Plan >	3	90.0	0%	0%	-6.5	-7%	-0%
	No SEN >	22	99.0 ⬇	32% ⬇	0%	-5.1 ⬇	-30% ⬇	-8%
EAL	First language not English >	4	97.1	0%	0%	-4.4	-48%	-1%
	First language English >	25	98.6 ⬇	36% ⬇	0%	-4.8 ⬇	-17%	-8%
Mobility	Joined in Y5 or Y6 >	1	96.5	0%	0%	-5.2	-46%	-0%
	Joined before Y5 >	28	98.4 ⬇	32% ⬇	0%	-4.7 ⬇	-21% ⬇	-7%
Ethnicity	White >	28	98.5 ⬇	32% ⬇	0%	-4.8 ⬇	-21% ⬇	-7%
	Pakistani >	1	95.5	0%	0%	-3.3	-29%	-0%



Subjects

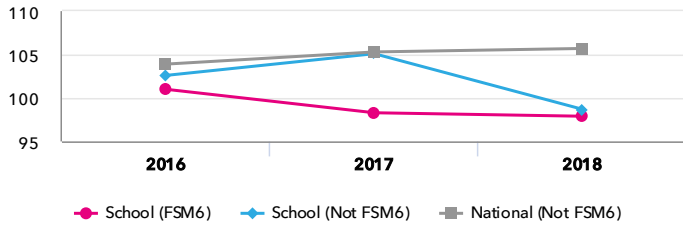
KS2 subject performance 2018

	Actual results			Pupil progress			Actual results over time		
	2016	2017	2018	2016	2017	2018			
Number of Pupils / % Matched	29	31	29	100%	97%	100%			
Reading									
% Expected standard+	62%	65%	41% ⬇	+4%	+5%	-23% ⬇			
% Higher standard	14%	19%	10% ⬇	+5%	+3%	-11%			
Scaled Score	100	103	101 ⬇	-0.0	+0.2	-4.1 ⬇			
Level 4+	-	-	-	-	-	-			
Level 4B+	-	-	-	-	-	-			
Level 5+	-	-	-	-	-	-			
Average Point Score	-	-	-	-	-	-			
Writing									
% Expected standard+	83%	71%	66%	+14%	+7%	-2%			
% Higher standard	10%	13%	10%	+4%	+2%	-5%			
Scaled Score	102	99	98 ⬇	+2.6 ⬆	+1.3	-1.6 ⬇			
Level 4+	-	-	-	-	-	-			
Level 5+	-	-	-	-	-	-			
Average Point Score	-	-	-	-	-	-			
Maths									
% Expected standard+	90% ⬆	68%	34% ⬇	+24% ⬆	+3%	-30% ⬇			
% Higher standard	10%	26%	7% ⬇	+1%	+9%	-11%			
Scaled Score	104	104	97 ⬇	+2.4 ⬆	+1.2	-5.4 ⬇			
Level 4+	-	-	-	-	-	-			
Level 4B+	-	-	-	-	-	-			
Level 5+	-	-	-	-	-	-			
Average Point Score	-	-	-	-	-	-			
Grammar, Punctuation & Spelling									
% Expected standard+	90%	58% ⬇	45% ⬇	+25% ⬆	-7%	-21% ⬇			
% Higher standard	17%	19%	7% ⬇	+6%	-2%	-20% ⬇			
Scaled Score	105	102 ⬇	99 ⬇	+3.2 ⬆	-2.2 ⬇	-6.5 ⬇			
Science									
% Expected standard+	100% ⬆	84%	69%	-	-	-			
Level 4+	-	-	-	-	-	-			
Level 5+	-	-	-	-	-	-			
Average Point Score	-	-	-	-	-	-			

Disadvantaged pupils

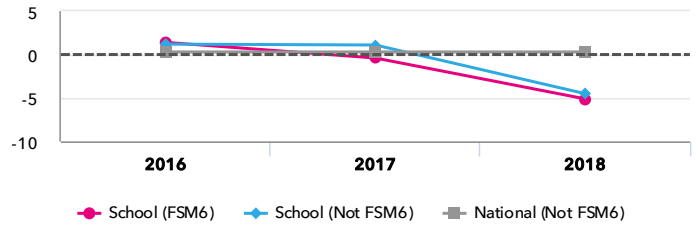
KS2 attainment for disadvantaged pupils 2018

Average Scaled Score (Re, Ma)



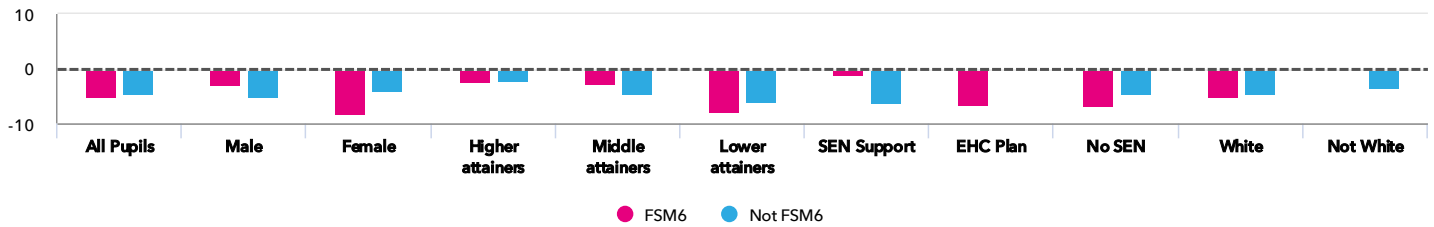
KS2 progress for disadvantaged pupils 2018

Average Scaled Score (Re, Ma)



Progress gap

Average Scaled Score (Re, Ma)

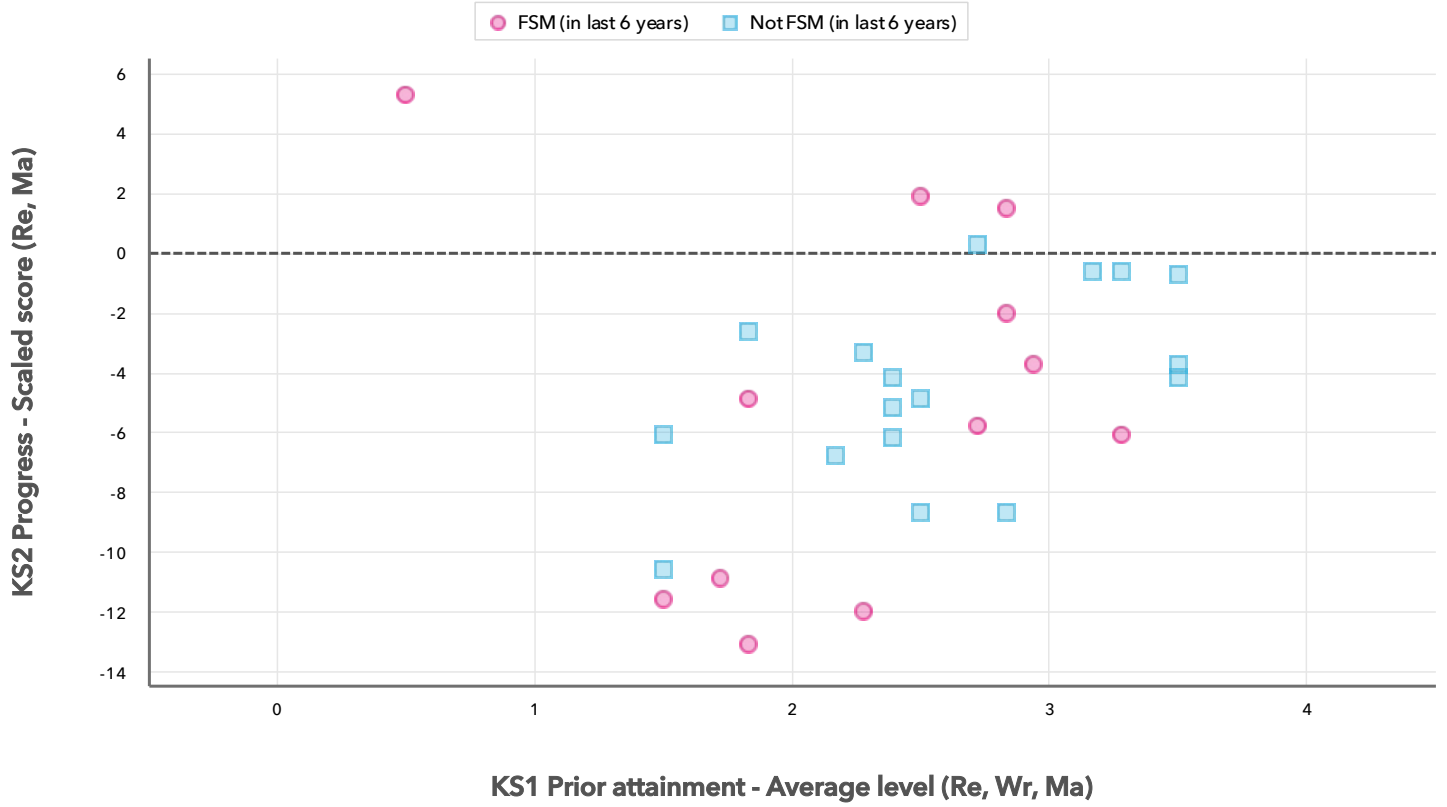


Attainment & progress

Pupils		Attainment			Progress				
		Average Scaled Score (Re, Ma)			Average Scaled Score (Re, Ma)				
		FSM6	Not FSM6	Gap	FSM6	Not FSM6	Gap		
Summary	All Pupils	12	17	97.9	98.7	-0.8	-5.1	-4.5	-0.6
Gender	Male	7	8	97.1	97.8	-0.7	-3	-5.2	2.2
	Female	5	9	99	99.4	-0.4	-8.1	-3.9	-4.2
Prior Attainment	Higher attainers	3	5	106.2	109	-2.8	-2.2	-2	-0.2
	Middle attainers	3	3	102.5	100.7	1.8	-2.5	-4.4	1.9
	Lower attainers	6	9	88.1	92.3	-4.2	-7.9	-6	-1.9
SEN Group	SEN Support	3	1	101.3	84.5	16.8	-0.5	-6.1	5.6
	EHC Plan	3	-	90	-	-	-6.5	-	-
	No SEN	6	16	97.4	99.6	-2.2	-6.8	-4.4	-2.4
Ethnic Group	White	12	16	97.9	98.9	-1	-5.1	-4.6	-0.5
	Not White	-	1	-	95.5	-	-	-3.3	-

Scatterplot

KS2 Pupil scatterplot 2018 29 pupils highlighted by Pupil Premium



Context

Context · Year 6 · 2017 / 2018

		Pupils	Proportion	
			School	National
Summary	All Pupils	29	100%	100%
Gender	Male	15	52%	51%
	Female	14	48%	49%
Prior Attainment	Higher attainers	8	28%	31%
	Middle attainers	6	21%	35%
	Lower attainers	15	52%	29%
Pupil Premium	FSM (in last 6 years)	12	41%	30%
	Not FSM (in last 6 years)	17	59%	69%
FSM	FSM	4	14%	15%
	Not FSM	25	86%	85%
FSM Ever	FSM (ever)	13	45%	31%
	Not FSM (ever)	16	55%	69%
Term of Birth	Autumn Term	14	48%	33%
	Spring Term	8	28%	32%
	Summer Term	7	24%	35%
SEN Group	SEN Support	4	14%	15%
	EHC Plan	3	10%	3%
	No SEN	22	76%	82%
EAL	First language not English	4	14%	20%
	First language English	25	86%	80%
Mobility	Joined in Y5 or Y6	1	3%	7%
	Joined before Y5	28	97%	93%
Ethnicity	White	28	97%	74%
	Pakistani	1	3%	4%

Absence · Year 6 · 2017 / 2018

		Pupils	Absence		Persistent absentees	
			School	National	School	National
Summary	All Pupils	29	4%	4%	3%	5%
Gender	Male	15	4%	4%	7%	6%
	Female	14	4%	4%	0%	5%
Prior Attainment	Higher attainers	8	3%	3%	0%	2%
	Middle attainers	6	5%	4%	0%	4%
	Lower attainers	15	4%	5%	7%	10%
Pupil Premium	FSM (in last 6 years)	12	6%	5%	8%	12%
	Not FSM (in last 6 years)	17	3%	3%	0%	3%
FSM	FSM	4	5%	6%	0%	16%
	Not FSM	25	4%	4%	4%	4%
FSM Ever	FSM (ever)	13	6%	5%	8%	11%
	Not FSM (ever)	16	3%	3%	0%	3%
Term of Birth	Autumn Term	14	4%	4%	7%	6%
	Spring Term	8	5%	4%	0%	6%
	Summer Term	7	3%	4%	0%	5%
SEN Group	SEN Support	4	6%	5%	0%	10%
	EHC Plan	3	6%	7%	33%	20%
	No SEN	22	3%	4%	0%	4%
EAL	First language not English	4	5%	4%	0%	5%
	First language English	25	4%	4%	4%	6%
Mobility	Joined in Y5 or Y6	1	6%	6%	0%	15%
	Joined before Y5	28	4%	4%	4%	5%
Ethnicity	White	28	4%	4%	4%	6%
	Pakistani	1	4%	5%	0%	6%